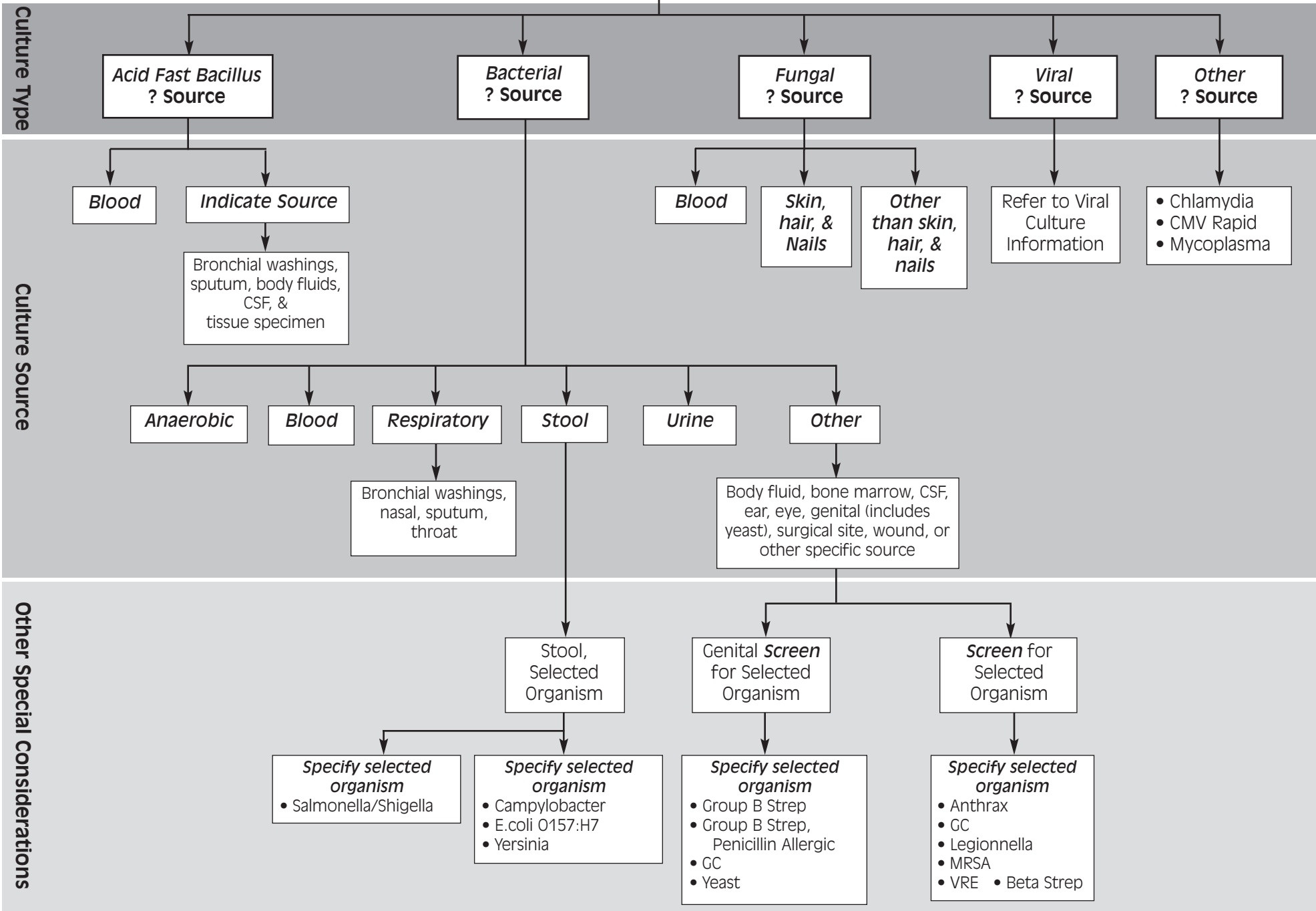


What type of Culture?



Culture Type

Culture Source

Other Special Considerations

Acid Fast Bacillus
? Source

Bacterial
? Source

Fungal
? Source

Viral
? Source

Other
? Source

Blood

Indicate Source

Bronchial washings, sputum, body fluids, CSF, & tissue specimen

Blood

Skin, hair, & Nails

Other than skin, hair, & nails

Refer to Viral Culture Information

- Chlamydia
- CMV Rapid
- Mycoplasma

Anaerobic

Blood

Respiratory

Stool

Urine

Other

Bronchial washings, nasal, sputum, throat

Body fluid, bone marrow, CSF, ear, eye, genital (includes yeast), surgical site, wound, or other specific source

Stool, Selected Organism

Genital *Screen* for Selected Organism

Screen for Selected Organism

Specify selected organism
• Salmonella/Shigella

Specify selected organism
• Campylobacter
• E.coli O157:H7
• Yersinia

Specify selected organism
• Group B Strep
• Group B Strep, Penicillin Allergic
• GC
• Yeast

Specify selected organism
• Anthrax
• GC
• Legionella
• MRSA
• VRE • Beta Strep